

PORT ARTHUR & TASMAN PENINSULA PHOTOGRAPHY TRIP
28 – 30 APRIL & 1 MAY 2023 with the NTCC (3 Nights)

CONTENTS

ACCOMMODATION	2
Port Arthur Motor Inn.....	2
Port Arthur Villas.....	2
Port Arthur Holiday Park.....	3
Other Suggested Accommodation Options.....	3
TASMAN PENINSULA MAP & Driving Times	4
RESTAURANTS – EATERIES	5
1830 Restaurant and Bar.....	5
On The Bay Restaurant.....	5
Port Arthur Historic Site Café	5
Port Arthur Motor Inn Restaurant (Group Dinners)	6
The Pickers Pantry Orchard Café.....	6
DOO-Lishus.....	6
Lucky Ducks Restaurant.....	7
Federation Artisan Chocolate	7
Dunally Waterfront Café	7
McHenry Distillery (Gin, Vodka and Whisky).....	8
PLACES TO SEE AND THINGS TO DO	8
Tasman Island Cruises (Rob Pennicott)	8
Port Arthur Historic Site	9
After Dark Package.....	9
Port Arthur Historic Site Ghost Tour	10
Isle of the Dead Cemetery Tour.....	10
Commandant’s Tour	11
Escape from Port Arthur Tour.....	11
Tessellated Pavements – Eaglehawk Neck,	11
Sunrises & Sunsets	11
Map of Tessellated Pavement, Blow Hole, Doo Town, Tasmans Arch, Devils Kitchen & Pattersons Arch	12
Blow Hole.....	13
Doo Town.....	13
Map of Doo Town, Tasmans Arch and Devil’s Kitchen	14
Tasmans Arch.....	14
Devils Kitchen.....	14
Patterson’s Arch & Tasman Arch to Waterfall Bay.....	15
Remarkable Cave.....	15
Tasmania’s National Park Passes – Costs.....	16
Map Showing Location of Remarkable Cave, & Low Tide Times	17
Coal Mines Historic Site.....	18
SUGGESTED ITINERARY FOR FRIDAY, SATURDAY & SUNDAY 28-30 APRIL 2023	18

PORT ARTHUR & PENINSULA PHOTOGRAPHY TRIP **28-30 APRIL & 1 MAY 2023 WITH NTCC – (3 Nights)**

ACCOMMODATION *(Costs quoted here were as of 6 September 2022)*

- **PORT ARTHUR MOTOR INN AND RESTAURANT** – (3.5 star hotel)

29 Safety Cove Rd, Port Arthur – very close to the Port Arthur Historic site.

(03) 6250 2101

Cost for 3 nights on 28 & 29 April & 1 May 2023 (\$155/night – Booking, Expedia, Wotif, Hotels.com) (as of 6-9-2022).

All rooms air conditioned for extra comfort, with a choice of different types of accommodation to suit all budgets. You can choose from Spa, Officer or Guard rooms, Spa and officer having queen beds, while Guard rooms have a double and a single and so are suitable for families. Rooms also provide access to the Port Arthur site. Family interconnecting rooms also available upon request. This is where the advantage of staying at the Port Arthur Motor Inn will become most apparent. Our dining room is sited in the front of the building to capture what is arguably the very best view of the historic settlement of Port Arthur – a superb setting for dining. In winter settle by the fireplace.



- **PORT ARTHUR VILLAS** (4.5 star apartments)

51 Safety Cove Rd, Port Arthur

Ph: 6250 2239

Cost for 3 nights (Port Arthur Villas direct / Booking.com, for 28 & 29 April & 1 May 2023) as of 6-9-2022.

Studio Economy (sleeps 3) - \$504 for 3 nights or \$630 for 2 people for 3 nights

Studio Villa (sleeps 3) - \$630 – for 3 nights

Family Room – 2 bedrooms – 1 Queen Bed or 2 single beds (sleeps 4) - \$765 for 3 nights - no prepayment, or \$612 paid up front – Booking.com.

Premium four-star apartments right opposite a World Heritage penal site, especially worth visiting in the winter, whether it is the history, the wilderness tours or the cuisine which brings you. Port Arthur Villas are nine individually furnished rooms, with the choice of Studio, Standard Room, Family Room, and Companion (with 2 bedrooms). Not only are there kitchens equipped with refrigerators, ovens, microwaves and stoves, but there are even iPod docks for the guests, as well as free wireless internet. There are private bathrooms, which are not ensuite. Among the amenities the rooms come with are towels and linens, premium bedding, a phone, the all-important coffee and tea-maker, air conditioning, television with premium channels, a furnished patio and they even throw in free bottled water.

Parking is free at this family-friendly, no-smoking motel, and features include a computer station, business centre, laundry and babysitting services, a picnic area and a garden. If you are interested in booking tours of the area or ticketed events, the staff provide assistance with this. In the public areas, as in the rooms, there is wireless internet. For a surcharge, continental breakfast is also available. Among the attractions there is obviously the ocean location, as well as the fact that it is a mere three kilometres from Port Arthur Historic Site, and just five kilometres from the Isle of the Dead and Point Puer.



- **NRMA Port Arthur Holiday Park** (4.5 star rating on the wotif website)

Lot 1, Garden Point Road, Port Arthur

Ph: 6250 2340

Costs: for 28 April – 1 May, ie, 3 nights. (wotif.com as at 6-9-22). Garden Cabin – 1 double bed and 1 single bunk bed, sleeps 4 - \$368.

Studio Cabin – 1 large double bed – 2 people x 3 nights, \$395. Same cost for Studio Cabin with Disability Access - *only 1 left as at 6-9-2023 on the wotif website.*

Waterview Cabin – 1 double bed and 2 x single bunk beds – 2 people x 2 nights, sleeps 6, \$473.

Peninsula Cabin – Bedroom 1 – 1 large double bed, Bedroom 2 – 2 x single beds, sleeps 4, 3 nights, \$607. See more options on the wotif website.

The Park offers a range of accommodation including studio, one and two bedroom cabins, safari tents, a group bunkhouse, as well as ensuite, powered and unpowered sites. Facilities include modern amenities, camp kitchen, pump track and pizza oven. This is located 4 minutes' drive from the Port Arthur Historical Site. It is within 16 minutes' drive of many local attractions including Eaglehawk Neck and the Remarkable Cave. Linen and towels are provided.



Modern self-contained cabins



Glamping

There are also other options, egs, Air BnB's and private cottages. Examples:

- Larus Waterfront Cottage at White Beach.
- Stewarts Bay Beach House, Port Arthur
- Harpers on the Beach at White Beach
- Storm Bay Guest House at White Beach
- Parkers Holiday Flats at Nubeena
- Taranna Cottages at Taranna
- The Mussel Boys at Taranna
- Norfolk Bay Convict Station, at Taranna
- Parsons Bay Retreat at Nubeena.
- Fox & Hounds Inn. (However not good reviews – all recent entries were 1 star ratings on TripAdvisor, needs renovation, but cheap). <https://foxandhounds.com.au>, and https://www.tripadvisor.com.au/Hotel_Review-g504319-d320616-Reviews-The_Fox_and_Hounds_Inn-Port_Arthur_Tasmania.html

Also the Lufra Hotel and Apartments at Eaglehawk Neck.

Tasman Peninsula Map



DRIVING TIMES

Option 1 – Midlands Highway to Campbell Town, turn off to Lake Leake and on to Swansea, continue on to Orford, Dunalley and on to Port Arthur – **approx. 4 hours driving time.**

Option 2 – Via Midlands Highway, bypass Hobart by taking the B31 after Oatlands (Mud Walls Road) and drop down to the Coal River Valley to Campania; turn left onto C350, Finger Post Road, then turn right onto the A3, Tasman Highway to Sorell; continue onto the Arthur Highway, A9, then turn right onto the C349 Sugarloaf Road, continue onto the C334, Fulham Road to Dunalley, then re-join the Tasman Highway on A9 to Port Arthur – **approximately 4 hours driving time.** (Note: There are lots of roadworks along the Midlands Highway at present, that will continue through to 2024. Allow an extra half hour's driving time down the Highway).

Option 3 – Via Midlands Highway, then the B31 after Oatlands to Sorell, then the A9 Tasman Highway through to Port Arthur – **approximately 4 hours driving time.**

RESTAURANTS - EATERIES

- **1830 Restaurant and Bar** (4.5 stars on Trip Advisor)

6973 Arthur Hwy, Port Arthur. Reservations: Ph: 6251 2310.

Open for dinner Wednesday – Saturday from 5:00pm

Open for lunch on Sundays from 12:00pm – 3:00pm

Seafood, Grill, Australian. Price Range \$16-\$48

Vegetarian Friendly, Gluten Free Options, Vegan Options, Halal and other dietary options available upon request.

Menu: https://portarthur.org.au/wp-content/uploads/2022/07/1830_Restaurant_Dinner_Menu.pdf



- **On the Bay Restaurant** (4 stars)

6955 Arthur Hwy, Stewarts Bay Lodge, Port Arthur

Open – Breakfast Monday – Sunday 8:00am – 10:00am.

Dinner, Tuesday – Saturday from 5:30pm

Steakhouse, Seafood, Australian. Price Range \$18 - \$38

Vegetarian Friendly, Gluten Free Options, Vegan Options

Reservations: Ph: 6250 2771

Menu: <https://stewartsbaylodge.com.au/wp-content/uploads/2022/06/OTB-FULL-MENU-2022.02.pdf>



- **Port Arthur Historic Site Café** (4.3 stars)

Open 9am - 5pm 7 days

Our café on the upper level of the Visitor Centre, offers you a range of options to satisfy your appetite during your visit. Enjoy freshly brewed coffee and sweet treats, thirst-quenching cold drinks, beers, wines and spirits, and fresh, delicious food, all made in-house using local ingredients. If you're in a hurry to explore, pick up a pack of tasty sandwiches for a picnic in the garden; or if it's time for a reviving break, choose something cooked to order in our kitchens and relax inside or on our deck as you soak up views of the site.



- **Port Arthur Motor Inn Restaurant - (Group Dinners)**

Open: 7 nights a week - (3.5 stars)

29 safety Cove Rd, Port Arthur.

(03) 6250 2101

Views over the historic site

Gluten Free Options, Vegan, Vegetarian options.

There is an excellent Dining Room with a huge selection of dishes available and very well prepared and delicious.

Menus: <https://www.portarthur-inn.com.au/restaurant/menu#mains>



- **The Pickers Pantry Orchard Café**

45 Parsons Bay Rd, Nubeena

0431 892 527

Hours: Thursday to Monday 9am – 3pm. Closed Wednesdays

The Picker's Pantry is situated in a beautiful pear orchard. We offer great coffee & homemade food. Enjoy the view with a cuppa and a cherry choc velvet. We also have our delicious roasted cauliflower & butter bean soup, toasties and cakes. And of course freshly baked sourdough is for sale as well!



- **DOO-Lishus - Fresh caught fish and chips (4.5 stars) (See also page 8)**

Blowhole Road, at the Blow Hole, Eaglehawk Neck.

Open 7 days from 9am – 6pm, Lunch & Brunch \$7 - \$28. Cash Only.

Best fish and chips in Tasmania! Gourmet homemade scallop, rabbit, and venison pies, and a berry dream, and freshly made ice creams to die for! Offers fresh local oysters and rock lobster in season – absolutely the best in Tassie. Fresh locally caught fish, squid or scallops and chips. Mouth-watering local berries in season – raspberries, strawberries, blackberries, silvanberries and boysenberries. Smoothies, icecream cones and banana splits also available. Food van with a difference. Alfresco dining and very reasonable prices. Takeout, Outdoor Seating, Seating, Parking Available, Street Parking, Wheelchair Accessible.



- **Lucky Ducks Restaurant** (3 stars)

1665 Main Road, Nubeena

Ph: 6250 2777

With huge picture windows this bright waterfront restaurant offers casual dining and full table service. All food is made in house and grown on their own farm or sourced locally. Ever changing menus offer something for everyone. Fully licensed offering an exclusive Tasmanian wine list. Please phone ahead to reserve your table. It offers breakfast, lunch and dinner.



- **Federation Artisan Chocolate**

2 South Street, Taranna

Ph: 6250 3435

Open: Monday 10am-12pm; Tuesday 10am-3pm; Wednesday 9am-3pm, Thursday 9am-3pm and Friday 9am-3pm. Closed Saturday and Sunday.

Federation Artisan Chocolate 10 minutes before Port Arthur utilises traditional manufacturing techniques and quality chocolate bases and ingredients to produce delicious mouth-watering chocolate. This is a unique chocolate experience where you can see the rich creamy chocolate being handmade, taste the end result and buy direct from this family business. **Makers of Sugar Free, Vegan and Gluten free chocolate.** There is something for everyone. Fudge and Nougat are also made on the premises, and you can enjoy a hot cup of Chocolate Desire, our own blend of chocolate that includes our Papua New Guinea Dark Chocolate as you watch our chocolatiers lovingly create daily.

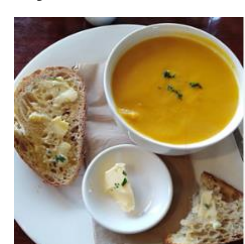


- **Dunalley Waterfront Café** (4 stars)

4 Imlay Street, Dunalley

Ph: 6253 5122

Overlooking Blackmans Bay, this licensed Café and Gallery highlights the best of regional produce and **is proudly the cellar door for the acclaimed local Bream Creek Vineyard Winery.** It houses a gallery that highlights local artists and craftspeople. We welcome you to join us for a quick coffee or cake on your way to sightsee around town or take a long lazy lunch with friends and family.



McHENRY DISTILLERY



229 Radnor Rd, Port Arthur
Gins, Vodka and Whisky

Open 7 days a week 11am – 4pm.

Tours and Tasting – 12:00pm and 2:00pm Monday to Friday. \$25/person, including tasting paddle. Bookings essential. Ph: 6250 2533.

TASMAN PENINSULA – PLACES TO SEE AND THINGS TO DO

TASMAN ISLAND CRUISES – Port Arthur – Rob Pennicott

3 Hour cruise departing Port Arthur (4.9-star rating)

9:15am to 1:00pm

Cost \$155.00 (This excludes the Port Arthur Historical Site).

- An unforgettable **3-hour wilderness cruise** along the coastline.
- **Travel** beneath the **highest vertical sea cliffs** in the Southern Hemisphere at Cape Pillar.
- Guests explore **waterfalls, rock formations, archways** and **deep-sea caves**.
- Discover a **variety of wildlife** including **hundreds of seals, migrating whales** and **sea birds** in their thousands.
- Ride in a **custom-built yellow boat** that is ideal for viewing the spectacular coastline and wildlife of the **Tasman Peninsula**.
- Enjoy **covered, open-air tiered seating** that provides an **excellent all-round view**.

https://www.youtube.com/watch?time_continue=62&v=hQhh61-UhxQ&feature=emb_logo



PORT ARTHUR HISTORIC SITE

Pre-Bookings strongly recommended.

Adult \$47, Concession \$38 and Child \$22.

Your site entry ticket gives you two consecutive days to explore and enjoy Port Arthur Historic Site's many sites, tours and activities including:

- entry to the Port Arthur Gallery, which includes interactive exhibits and displays that tell the story of the Port Arthur Historic Site and its people,
- a guided Introductory Walking Tour,
- 20-minute Harbour Cruise (*please note that face masks are still required on board the MV Marana).
- access to more than 30 historic buildings, ruins, restored houses, heritage gardens and walking trails.

A courtesy shuttle service is also available for people with restricted mobility (available between 10:30am and 3:30pm each day, with an extended service offered during summer).



AFTER DARK PACKAGE

Cost \$105 per person. Bookings essential. Ph 1800 659 101

Join us for a delicious two-course dinner in 1830 Restaurant & Bar, before gathering up your lantern and following your guide out into the night on our very popular Ghost Tour.

With sweeping views of the Penitentiary, gardens and grounds, 1830 Restaurant & Bar is a perfect place to enjoy a relaxed meal with friends. Our menu uses fresh seasonal produce sourced from local growers and producers, and your After Dark package includes a glass of Tasmanian wine, beer, or soft drink.

This convenient package means the hardest part of your night will be choosing between entree and main, or main and dessert.

After Dark Packages in 1830 Restaurant and Bar are available Wednesday to Saturday from 5:00pm.

Ghost Tours run approximately 90 minutes and departure times vary each month; below is our regular tour schedule noting that additional tours may be added as required on the evening:

Before Daylight Savings (March – September) Tours depart at 5:30pm and 7:30pm.

The Ghost Tour is a 90-minute fully guided, lantern-lit walking tour that includes a two-kilometre walk around the site at night.

Due to the limited access through the dark recesses of our heritage buildings, the Ghost Tour is not suitable for people with restricted mobility and not wheelchair accessible. Tours are limited to 15 people per tour for social distancing.

PORT ARTHUR HISTORIC SITE GHOST TOUR

1800 659 101

6973 Arthur Highway, Port Arthur.

Cost \$35. Bookings are essential.

Wednesday to Saturday. Tours depart at 7:00pm; 8:00pm; 8:30pm and 9:00pm.

A 90-minute, lantern-lit tour of Port Arthur after dark, the Ghost Tour gives you exclusive night-time access to the World Heritage-listed historic site. Experienced guides tell stories of the paranormal documented from convict times to modern-day while leading you through some of Port Arthur's most haunted buildings and ruins.

The tour covers over 2 kilometres of walking and runs in most weather conditions. We do not recommend people with restricted mobility to join the tours. Dress warmly and wear comfortable shoes, raincoats are recommended in bad weather (umbrellas are not permitted on the tour).



ISLE OF THE DEAD CEMETERY TOUR – Port Arthur

12:20pm, 1:00pm and 3:00pm daily. Each tour runs for approximately 1 hour.

Adults \$30. Child \$15. These are in addition to normal site entries. Tours are limited to 20 people per tour.

The Isle of the Dead holds the stories of many of the people of Port Arthur – in life and death. Port Arthur's tiny cemetery island is the final resting place for more than 1000 convicts, military and civil officers, women and children, who were buried here between 1833 and 1877.

The Isle of the Dead has two separate burial sections – convicts were laid to rest in mostly unmarked graves at the island's southern end, while the higher northern end was reserved for free and military burials, marked by headstones. The anonymity of the convicts was somewhat redressed after 1850, when some convict graves were given headstones.

On this tour, you'll journey to the island aboard the *MV Marana*, and take a guided walking tour of the island. You'll hear the personal stories of convicts who were transported here from across the world, the soldiers who gave their lives to guard the prison, the officers, and their families who followed them to the ends of the earth. **The Isle of the Dead tour includes walkways with relatively steep gradients up to 1:8. Assistance is recommended for people with a physical limitation that wish to take this tour.** Please contact us for more information at reservations@portarthur.org.au or phone 1800 659 101.



Commandant's Tour

Cost \$30 – 12:30pm daily.

This 90-minute walking tour incorporates Port Arthur's most significant buildings, such as the Penitentiary, Separate Prison and Convict Church, providing insights into the structures and history, much as the prison commandant did for visiting dignitaries in the 19th century.

Escape From Port Arthur Tour

Cost \$20 – 11am daily.

Port Arthur was deliberately positioned to prevent convicts from escaping – surrounded by wild sea, with only the narrow Teralina / Eaglehawk Neck isthmus that needed to be guarded against land escape. This hour-long tour dips into the tales of those who tried to break out, and the extreme measures they took to do so.

TESSELLATED PAVEMENTS – Eaglehawk Neck

A sculpture marks the location of the **Dog Line** barricade, where a line of fierce dogs were chained across The Neck to prevent convicts from escaping Port Arthur. The Neck (not to be confused with The Neck on Bruny Island) is better known these days for its rock stars. Striking geological formations include the geometrically perfect patterns of the **Tessellated Pavement** the gaping **Tasmans Arch**, the **Blowhole** and a deep cleft known as **Devils Kitchen**.



Great for pre-dawn long exposures



or



Blue Hour



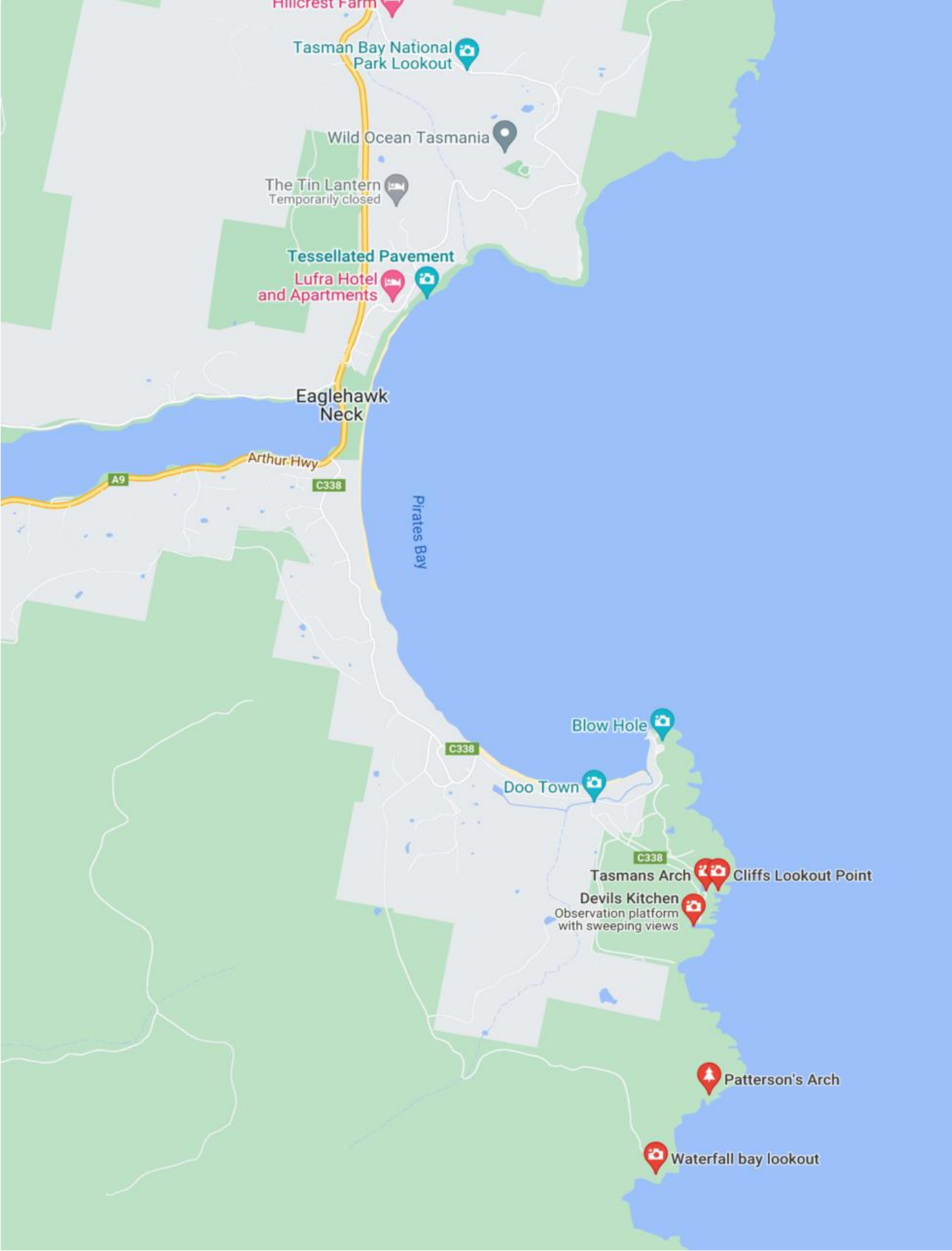
SUNRISES Saturday 29/4/23 – 6:57am,
Monday 1/5/23 – 6.59am.

Sunday 30/4/2023 – 6:58am,

SUNSETS Friday 28/4/23 – 5:17pm,
Sunday 30/4/23 – 5.15pm

Saturday 29/4/23 – 5:15pm,

Tessellated Pavement, Blow Hole, Doo Town, Tasmans Arch, Devils Kitchen, & Patterson's Arch.



BLOW HOLE



Visiting the Blowhole, Tasman Arch and Devils Kitchen makes for one of Tasmania's finest afternoons. The Blowhole is one of the Tasman Peninsula's most famous and ruggedly beautiful attractions. Like neighbouring Tasman Arch and Devils Kitchen, the Blowhole began as a small cave. Millions of years of water and wind erosion have led to the unique geological formations seen today. When the seas are fierce, the Blowhole and its clouds of spray can be a surprising and formidable sight.

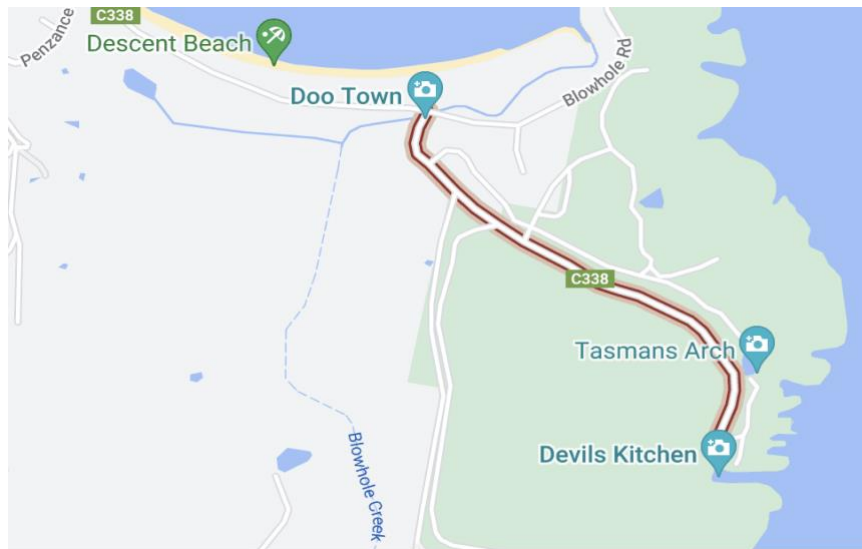
Add to this some fresh caught fish and chips from "Doo Lishus" and you're in paradise! *(See page 6).*

DOO TOWN

You'll find plenty of Doo Doo down in Doo Town. This small community started as a timber station back in the 1830's. It would eventually become a shack community and that's when the fun began. Somewhere around 1935, a Hobart architect by the name of Eric Round placed a nameplate on his shack. It read "Doo I 99."

Being a small community, everyone in town learned of the nameplate quickly. Then a neighbour of Mr. Round responded with a nameplate of his own. It read "Doo Me." The next neighbour plated his shack with "Doo Us." And hence the name of Doo Town. The quirky tradition continues today just 79 kilometres southeast of Hobart on Pirates Bay near Eaglehawk Neck. The whimsical names of the shacks might make you giggle, but the scenery will take your breath away. This picture-perfect location demands a smartphone with a high-quality camera, and the funny captions for your social media pics are endless. Take a walk around town to admire the funny shack name plates, and then take a nature walk which are some of the best Tasmania has to offer. Nearby Devils Kitchen, Tasman Arch and Blowhole are natural marvels. But be on the lookout for the one shack in town that lacks the word "Doo" on the name plate.





TASMANS ARCH

Tasman's Arch (a towering, cavern-like natural bridge) is beyond impressive and leads to a path with dramatic coastal views to the south. Tasman's Arch is a tall natural bridge in the sea cliffs of the Tasman Peninsula, that has also been carved out by the Tasman Sea. This beautiful geological formation is one of many which can be visited at Eaglehawk Neck and along the eastern side of the Tasman Peninsula.

Follow the path to an observation platform with spectacular views of the dizzying hole and the coast. As long as you stay behind the railings, you can stroll across the arch or climb some of the sea cliffs. Devils Kitchen and Tasman Blowhole are two nearby sights. You can gain more perspective by walking a 0.9-kilometre loop walking track.

Tasman's Arch was named after the Dutch explorer Abel Tasman, who played a key role in colonising Tasmania in the early 1800's.



DEVILS KITCHEN

Located on the rugged east side of the Tasman Peninsula, you'll see Devils Kitchen, a dramatic piece of coastline. Devils Kitchen is a deep trench that has been carved out by the crashing waves of the Tasman Sea. It started as a cave which has gradually been eroded away into a narrow, tall gap with steep cliffs. It looks like a giant has swung an axe into the side of a cliff, with an almost perfect cut being made.

However the Devils Kitchen is more than steep cliffs and crashing water. There are beautiful rock formations which have taken shape as a result of the erosion. There's also an area of flat rock with deep mosaic tile like lines, resembling a miniature version of the nearby Tessellated Pavement.

This attraction is part of a close group of three stunning, natural formations Devils Kitchen, Tasman's Arch and Blow Hole, which are all worth visiting.

Devils Kitchen started out as a small cave which from millions of years of strong waves from the Tasman Sea, has become a deep trench. While erosion is common at many ocean cliff faces, it's rare to see the effects as dramatic as they are at Devils Kitchen and other parts of the Tasman Peninsula.

Beyond Devils Kitchen are several short walks, the most popular being a 3.4km (1 1/2 hrs return) trail along the top of sea cliffs to Waterfall Bay.



PATTERSON'S ARCH – TASMAN ARCH TO WATERFALL BAY

Most visitors on the way to Port Arthur call into The Blowhole and nearby Tasman's Arch and Devils Kitchen.

Adjacent to Devil's Kitchen is the start of the Tasman Trail - a 7-hour walk to Fortescue Bay. A half an hour easy walk will get you to Waterfall Bay. Along the way Paterson's Arch is reached. There are 6 or more lookouts overlooking the ocean cliffs. A very spectacular and highly recommended walk.

The track is a wide pathway that is suitable for prams and wheelchairs – weather permitting. A fairly steep incline in places.

Spectacular arch in south-eastern Tasmania, hidden in the coastline of the Tasman Peninsula. You can see it the top of the cliff (walking access only), or from the Pennicott Tasman Island Cruise!



Patterson's Arch

REMARKABLE CAVE

15 minutes return, Grade 3: Some bushwalking experience is recommended. Tracks may have short steep hill sections, a rough surface and many steps. A valid Park Pass is required for entry to Tasmania's National Parks. *(See Note 1 below).*

Enjoy the vista from Maingon Bay Lookout of the rugged southern coastline before descending the steps to the spectacular Remarkable Cave.

From the car park it's a short, accessible walk to the large viewing platform where you will find exceptional views of Penguin Rocks and the bay. Wild waves pound away at the coastal rock below to create this dramatic coastline. You may be lucky and see a resident sea eagle soaring high above you, or a passing whale on its migration.

From the central carpark, descend the 115 steps to view the aptly named Remarkable Cave. You'll be surrounded by steep, ancient sandstone cliffs and view the cave from the custom-designed platform at the base at the foot of the sandstone cliffs, where the view is through the tunnel to its opening into the Southern Ocean.

The tunnel-shaped cave was formed through years of torment from crashing waves, eventually causing a wall of the sandstone cave to collapse and create the tunnel that stands today. Some of the collapsed rock from the cave can still be seen at the base of the cliffs.

At certain times of year, the waves rush through the tunnel creating a thrilling spectacle for those lucky enough to witness it. Be prepared to get a little wet!

From the carpark a number of walking options are available. To the east are walking tracks to Maingon Blowhole (1 hr 30mins return), Mount Brown (4 hr return) and Crescent Bay (4 hr return).



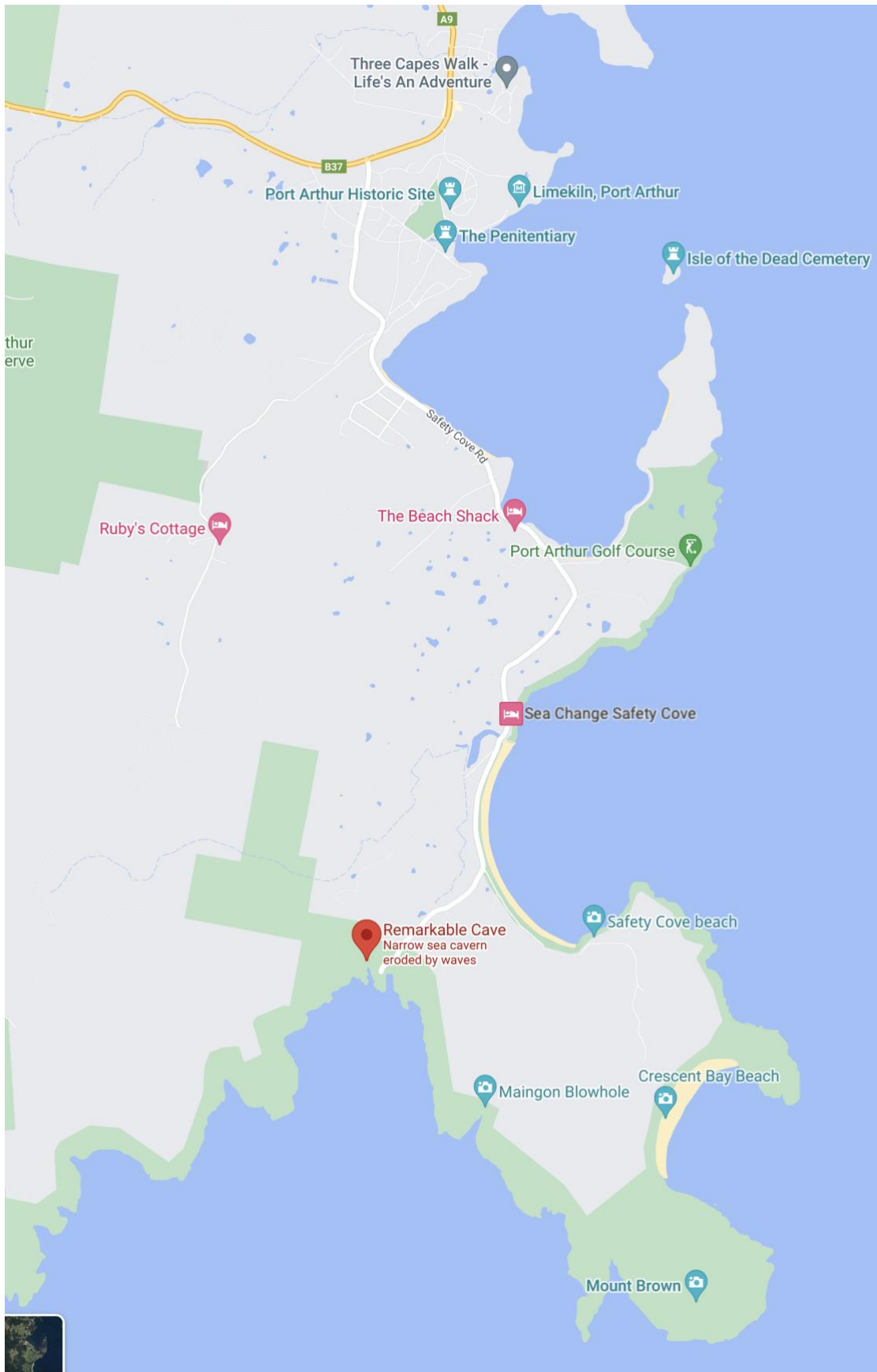
NOTE 1 – Tasmania’s National Park Passes – Costs

Holiday Pass – up to 2 months - \$82.40 per vehicle (includes Cradle Mountain).

Annual Pass – All parks – General - \$91.35 or \$73.10 – Concession. Seniors – all parks (conditions apply*) \$36.55 and One Park - \$46.70

* Holders of an Australian State Government issued Senior’s card (excluding Seniors Business Cards) are eligible to apply for a Seniors Park Pass.

Map showing location of Remarkable Cave



LOW TIDES (for easy access into the Remarkable Cave)

Friday 28 April 2023 – 09:00am (0.04m) and 7:53pm (0.47m)

Saturday 29 April 2023 – 09:47am (0.05m) and 9:01pm (0.46m)

Sunday 30 April 2023 – 10:32am (0.07m) and 10:09pm (0.43m)

V3 – 6 April 2023

COAL MINES HISTORIC SITE

Coal Mines Road, C341, Saltwater River. (See map on page 3).

Free entry. Open 7 days and complimentary visitor guides are available from the Port Arthur Historic Site Visitor Centre.

This historic site, near Saltwater River was Tasmania's first operational coal mine. Today, the site offers visitors the chance to discover among the uncrowded ruins a deeper understanding of Tasmania's convict heritage. Nestled amid quiet bushland 25 minutes' drive from Port Arthur, the ruins of the main settlement offer a glimpse into the lives of the convicts at this notorious punishment station.



SUGGESTED ITINERARY

FOR FRIDAY, SATURDAY, SUNDAY, 28-30 APRIL & MONDAY 1 MAY 2023

Friday 28 April 2023

- Drive down to the Tasman Peninsula at your leisure. Perhaps enjoy lunch at the Dunalley Waterfront Café enroute.
- Check into your accommodation.
- Friday afternoon at leisure – see many suggestions in this list.
- **Sunset is at 5:17pm. 4:30-4:45pm** - Sunset shoot either at the Tessellated Pavements & Blue Hour, or at Nubeena or White Beach (both face West). Another alternative, if low tide, is the Remarkable Cave, for fit people. Take a torch with you.
- **6:15pm Group Dinner at Port Arthur Motor Inn Restaurant.** 29 Safety Cove Rd, Port Arthur (very close to the Port Arthur Historic Site). (Numbers required for booking).
- **Weather permitting – Astro Shoot, 8:30-11:30pm – Location TBC.** (Possibly Tessellated Pavements - TBC).

Saturday 29 April 2023

- 6:15am – Sunrise over Tessellated Pavements – **Sunrise is at 6:56am.**
- Breakfast at leisure.
- Tasman Island Cruise (if pre-booked). Departure 9:15am – 1:00pm.
- Port Arthur Historic Site.
- Isle of the Dead Cemetery Tour.
- Enjoy the natural wonders of this beautiful Peninsula, ie, Tasman Blowhole, Tasmans Arch, Devils Kitchen, walk to Waterfall Bay.

- Doo Town and Doo-Lishus for lunch.
- Other Lunch possibilities: The Pickers Pantry Orchard Café, Lucky Ducks Restaurant, Port Arthur Historic Site Café/Restaurant.
- For chocolate lovers, visit Federation Artisan Chocolate.
- Lovers of Gin, Vodka and/or Whisky, could visit McHenry's Distillery.
- Coal Mines Historic Site for folk interested in more history.
- Remarkable Cave.
- **Sunset is at 5:15pm. 4:30-4:45pm** - Sunset shoot, same suggestions as for Friday night.
- **6:15pm Group Dinner at Port Arthur Motor Inn Restaurant.** 29 Safety Cove Rd, Port Arthur (very close to the Port Arthur Historic Site). **(Numbers required for booking)**. This overlooks the historic site and is within walking distance for anyone who has booked an evening Ghost Tour.
- Port Arthur Historic Site Ghost Tour (8:30pm or 9:00pm Tour, after dinner).
- **Weather permitting – Astro Shoot, 8:30-11:30pm – Location TBC.**

Sunday 30 April 2023

- 6:15am – Sunrise over Tessellated Pavements or other location – **Sunrise 6:57am.**
- Breakfast at leisure.
- Tasman Island Cruise (if pre-booked). Departure 9:15am – 1:00pm.
- Same suggestions as for Saturday.
- **Sunset is at 5:14pm. 4:30-4:45pm** Sunset shoot, same suggestions as for Friday night.
- **6:15pm Group Dinner at Port Arthur Motor Inn Restaurant.** 29 Safety Cove Rd, Port Arthur (very close to the Port Arthur Historic Site). **(Numbers required for booking)**.
- **Weather permitting – Astro Shoot, 8:30-11:30pm – Location TBC.** (*Possibly Port Arthur Historic Site - TBC*)

Monday 1 May 2023

- 6:20am – Sunrise over Tessellated Pavements or other location – **Sunrise 6:59am.**
- Breakfast at leisure.
- Check out of accommodation.
- Same suggestions as for Saturday.
- Drive back home at leisure via some of the areas not yet visited in this beautiful Peninsula.